



WRI BRASIL

# 2021 ANNUAL report

# table of contents

- 3 Letter of Presentation
- 6 About WRI Brasil
- 7 About the Global Network
- 10 Our Work in 2021
- 11 Cities
- 21 Forests
- 26 Climate
- 30 Communications
- 33 Board and Leadership
- 35 Team
- 37 Funders
- 39 Financials

Editorial team:

**Bruno Felin**  
**Cristina Bodas**  
**Fernanda Boscaini**  
**Joana Oliveira**

Graphic Design:

**Néktar Design**

Editorial coordination:

**Joana Oliveira**


Cover photo:

**HD Mídia Produções/  
WRI Brasil**

Translation:

**Melissa Harkin, CT**

September 2022

 [wribrasil.org.br](http://wribrasil.org.br)

 [facebook.com/wribrasil](https://facebook.com/wribrasil)

 [youtube.com/wribrasil](https://youtube.com/wribrasil)

 [flickr.com/wricidades](https://flickr.com/wricidades)

 [linkedin.com/company/wri-brasil](https://linkedin.com/company/wri-brasil)

 [twitter.com/wribrasil](https://twitter.com/wribrasil)

 [instagram.com/wribrasil](https://instagram.com/wribrasil)



# letter of **PRESENTATION**

Cotriguaçu/MT. Photo: HD Mídia Produções/WRI Brasil.



The current socio-environmental scenario and the climate emergency have required governments, companies, and civil society worldwide to take firmer and more effective steps towards a just transition to a sustainable development and well-being model for humankind. Writing economic and development policies that consider, respect, and value nature and people's quality of life is vital for our future.

At WRI Brasil, we believe that with science-based actions, it is possible to drive systemic changes that will improve lives, boost economic growth, reduce inequality, and ensure the protection of ecosystems.

That's what we work for. But never on our own. In 2021, we further strengthened our networking, promoting actions in partnership with various economic sectors, governments, academia, and civil society organizations.

As a result of a great partnership, last year, WRI Brasil created the initiative New Economy of the Brazilian Amazon – NEA-BR. Bringing together a group of almost 50 researchers from all over the country, NEA-BR aims to offer ways to accelerate and scale the transition to a more equitable economy that promotes development by valuing the cultural and biological diversity of the Amazon region. Only a new sustainable economic model can prevent the forest from reaching a tipping point of irreversible loss.

In the year that marked the beginning of the UN Decade on Ecosystem Restoration, WRI Brasil, together with the leading organizations, actors, and companies in the world of restoration, sought to promote the conservation

and recovery of native vegetation, leading and supporting projects in different ecosystems.

Seeking to catalyze systemic transformations, we also looked inside the organization. We strengthened the integration between the different projects of the Cities, Climate, and Forests programs. The Cities4Forests initiative, for example, proposes a look at forests from the point of view of cities, promoting nature-based solutions that can replace conventional infrastructure projects in urban areas. With this view, we seek to reduce urban populations' vulnerability to climate change's impacts.

In 2021, the Cities program used the motto “Survive, Renew, and Thrive” to refer to a series of actions for quality public transport. Looking back, we can say that this motto was the basis of our entire journey throughout the year. The year we got together again—in person—and participated in closer exchanges. Today we can say that we thrived as people, as an organization, and as a society. And that was only possible because we worked together, in partnership, in a network, in solidarity.

For us at WRI Brasil, the profound and urgent change that the planet needs only happens when the different actors join forces. For us, the future is a joint effort.

We want to thank all partners, funders, and friends who were and are with us in this challenge. In the following pages, we share some of this collective work.

Enjoy the reading!

**Marcelo Furtado**

Chairman of the Board of Directors



Timbau do Sul/RN. Photo: Kleber Cordeiro/Shutterstock.



# about WRI BRASIL

WRI Brasil is a research institute that turns great ideas into action to promote the protection of the environment, economic opportunities, and human well-being. We develop studies and implement sustainable solutions for the climate, forests, and cities. We combine technical excellence with political coordination and work in partnership with governments, companies, academia, and civil society.

São Paulo/SP. Photo: Léo Britto - Monomito Filmes/WRI Brasil.

## About the World Resources Institute

WRI Brasil is part of the global network of the World Resources Institute, a non-profit organization that conducts research, analyzes data and mobilizes coalitions to create solutions for people and the planet.

WRI has a team of more than 1,700 specialists and works in seven programs: Food, Forests, Water, Oceans, Cities, Energy, and Climate. It also has excellence centers in Equity, Economics, Finance, and Business.

The organization collaborates with partners in more than 50 countries. Currently, it has offices in 12: Brazil, China, Colombia, Ethiopia, India, Indonesia, Kenya, Mexico, the Netherlands, Turkey, the United Kingdom, and the United States.



Check out the global network's annual report to learn more about the work done globally in 2021.



### Publication

WRI 2021  
Annual Report



# our values

## **Integrity**

Honesty, candor, and openness must guide our work to ensure credibility and to build trust.

## **Innovation**

To lead change for a sustainable world, we must be creative, forward-thinking, entrepreneurial, and adaptive.

## **Urgency**

We believe that change in human behavior is urgently needed to halt the accelerating rate of environmental deterioration.

## **Independence**

Our effectiveness depends on work that is uncompromised by partisan politics, institutional or personal allegiances, or sources of financial support. We take pride in the independence of our ideas and work.

## **Respect**

Our relationships are based on the belief that all people deserve respect.

Cotriguaçu/MT. Photo: HD Mídia Produções/WRI Brasil.

## OUR APPROACH

### Count it

We start with data, creating user-friendly information systems, protocols, and standards. We conduct independent and impartial research to analyze relationships and develop solutions and communicate our findings in a captivating way.

### Change it

We work with public managers, business leaders, and civil society to achieve change, testing our ideas in real and complex situations. We set goals and take responsibility for them.

### Scale it

We identify and overcome barriers so that proven solutions multiply quickly and vastly. We work together with strategic partners that transform businesses, societies, and economies, nationally and internationally.





# our work in 2021

This report summarizes our approach to turning ideas into concrete results in 2021. We aim for Brazil to take a leading role in the global goal of halving greenhouse gas emissions by the end of the decade, ensuring a just transition in the countryside and in cities, with prosperity and quality of life for all. See the highlights of the Climate, Cities, and Forests programs in the last year.

Manaus/AM. Photo: Leandro Reichert/Shutterstock.



# cities

WRI Brasil works for more equitable and resilient cities that offer the population a better quality of life through low-carbon urban solutions. We promote the transformation of urban spaces into a safe environment for all people to live together and move around, prioritizing walking and cycling.

Through better planning of land use and improving public transport, we seek to expand the population's access to opportunities such as jobs, education, health, and leisure. We encourage the adoption of nature-based solutions to reduce people's vulnerability to climate change's impacts.

Belo Horizonte/MG. Photo: Antônio Salaverry/Shutterstock.



## SURVIVE, RENEW, THRIVE: ROAD TO QUALITY PUBLIC TRANSPORTATION

Public transportation is going through one of the most critical moments of a financial crisis that has been worsening for years. Saving it is urgent but insufficient: it is essential to rethink the way systems are structured, ensuring their economic viability, and improving the quality of service and people's access—who often have no other alternatives—to employment, health, education, and leisure.

We advocate for the survival of public transportation, but we believe that it is necessary to face the current crisis by driving a renovation that leads to generating the social and economic benefits of thriving urban mobility systems.

Surviving involves reimagining the models of concession contracts and how public transportation is financed. WRI Brasil has structured eight measures that cities can use to implement actions that generate additional, non-tariff revenue for their systems—including parking policies, ride-hailing services regulation, urban mobility fees, and commercial exploitation of bus stops. Based on our workshops, São José dos Campos developed an action plan and a critical path for its implementation.

## NO PUBLIC TRANSPORTATION MEANS NO CITY

During the 2021 Urban Mobility Week, WRI Brasil, ITDP Brasil, and Idec brought together leaders from Brazilian municipalities that have already started to do their part, introducing new sources of funds for public transportation and renewing contract models with incentives for quality, innovation, and efficiency.



### Watch the webinar

*No public transportation means no city. Local solutions for the sector's national crisis*

*\*In portuguese*



### In the press

*Cristina Albuquerque, Urban Mobility manager, became an ambassador for Mobilidade Estadão and started regularly publishing articles on their channel. Cristina Albuquerque, Urban Mobility manager, became an ambassador for Mobilidade Estadão and started regularly publishing articles on their channel.*

*\*In portuguese*



## ENGAGEMENT FOR REPLICABLE SOLUTIONS

To support overcoming a significant crisis while reimagining the future of public transportation, we coordinated the exchange of experiences between industry leaders in all regions of the country in the QualiÔnibus Benchmarking Group.

Comprised of 25 members, including cities, transport operators, entities, and partner organizations, the group held ten meetings in 2021 that brought together more than 500 participants to discuss the oscillations generated by the different COVID-19 waves and possible solutions to impacts on public transport demand.

We provided support with research methodologies, such as the customer listening group, to understand the rapid changes in the pandemic, as FETRANSPO, in Rio de Janeiro, and other cities in the group did. We reviewed concession contracts and supported cities such as Rio de Janeiro and Campinas in the design of new arrangements to promote the improvement of the service and its financial viability. We also held a workshop on how to enhance charging for parking on public roads to promote urban mobility equity, which resulted in the development of eight action plans by the cities in the group.

**Campinas/SP.** Photo: Léo Britto - Monomito Filmes/WRI Brasil.



## LESS POLLUTION, MORE QUALITY: THE FUTURE IS ELECTRIC

Renewing to clean and thriving public transportation involves electrification. While some electric buses are in operation in Brazil, they only account for less than 1% of the national fleet. To accelerate this transition, we developed guidelines for project structuring and the various stages of electrification, studying in detail the factors that led some cities to advance faster than others.

As part of a major global initiative—the TUMI E-bus Mission, which aims to directly support 20 cities worldwide in the transition to electromobility—WRI Brasil worked alongside five Brazilian municipalities to establish commitments and structure electrification projects.

Campinas, Curitiba, Rio de Janeiro, Salvador, and São Paulo have committed to electrifying around 3,000 buses by 2025.

As part of this support, we identified barriers to the transition—such as taxes—and helped cities better understand the impacts with the help of operational analysis tools and assessment of air quality effects on health. We supported Rio de Janeiro, Salvador, and Belo Horizonte in conducting tests with electric buses to identify the challenges and benefits of the technology and assess operation under real conditions.

## THE EXPANSION OF THE COMPLETE STREETS CONCEPT

After five years of working with the concept of Complete Streets in Brazil, we reviewed the implementation process, challenges, lessons learned, and results of interventions in eight cities in different regions. This work resulted in a report signed by 21 WRI Brasil, municipalities, and academia experts. The publication structures knowledge so that other cities can develop their own projects.

Our work in the Network of University Professors through the Complete Street Project was dedicated to making scholars from different educational institutions ambassadors in training new road design professionals.

We developed support materials and structured a methodology on Complete Streets to be used in classrooms across the country.

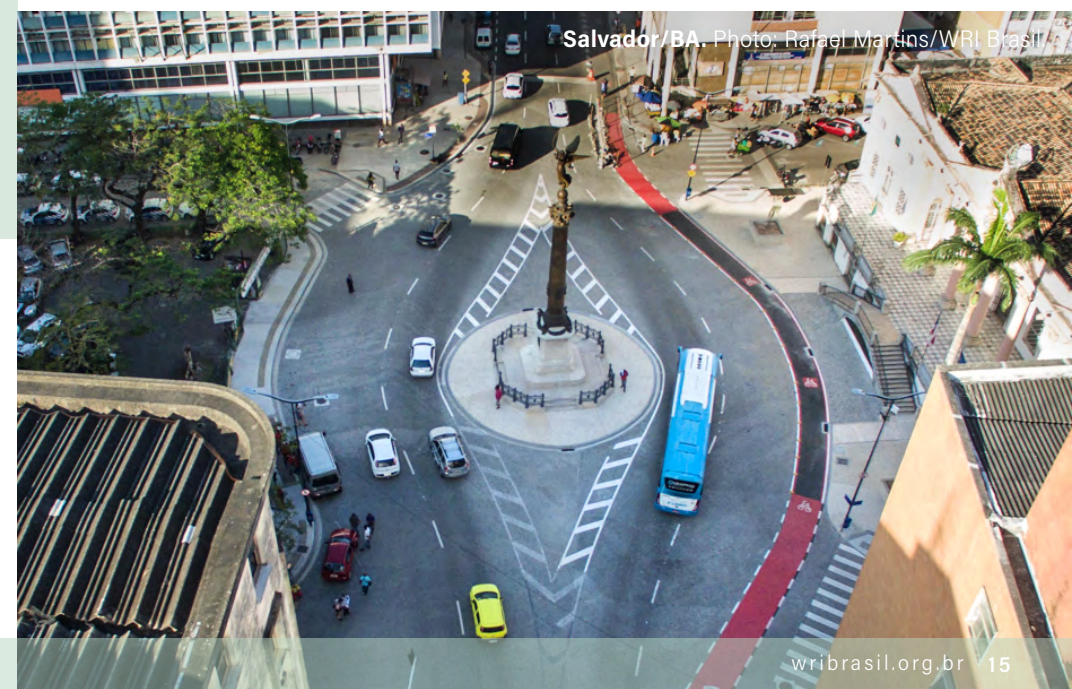
In 2021, our engagement with cities began to focus on the state of São Paulo with the creation of the *Rede Ruas Completas SP*.

The network comprises 20 cities in São Paulo that receive training and technical support for developing projects and policies to make the streets safer and more accessible for all.

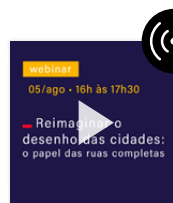
The results of the dissemination of the concept of Complete Streets went beyond our engagement, with cities such as Curitiba, Belo Horizonte, São José dos Campos, Porto Alegre, and others incorporating the approach into several projects.



Curitiba/PR. Photo: Daniel Castellano.



Salvador/BA. Photo: Rafael Martins/WRI Brasil.



Watch the webinar

*Reimagining city design: the role of complete streets*

*\*in Portuguese*



Publication

*Ruas Completas no Brasil (Brazil Complete Streets). Promovendo uma mudança de paradigma (Promoting a paradigm shift)*

*\*in Portuguese*



## NATIONAL PLAN TO SAVE LIVES

Together with the National Traffic Department (*Secretaria Nacional de Trânsito*, Senatran) and partners of the Bloomberg Initiative for Global Road Safety, we developed and executed the strategy to review the National Plan for the Reduction of Traffic Deaths and Injuries (*Plano Nacional de Redução de Mortes e Lesões no Trânsito*, Pnatrans).

Developed by health, traffic, transport, and justice experts, with extensive civil society participation, the plan signed by the Minister of Infrastructure in September 2021 provides guidelines for the country to reduce the national rate of deaths in traffic by at least 50% by 2028.



## CHILD-FRIENDLY CITIES

Children are victims of a city that is unprepared to embrace them, harming their relationship with the public space. Intending to ensure the integral development of children between 0 and 6 years old, São Paulo approved the Municipal Plan for Early Childhood in 2018. Among several initiatives, the plan includes Educating Territories and Social Urbanism, which are potential learning environments for children and their families in some of the city's most vulnerable areas. We supported this work by contributing to design the urban interventions and raise community awareness about air quality.

In 2021, the Jardim Lapena and Jardim Santo André neighborhoods in the east side of São Paulo, lacking adequate leisure spaces for children, gained new public spaces in underused town squares. Through community involvement in the process, primarily connecting children with the space and creating a sense of belonging, the locations were transformed into play areas and meeting centers for the entire community. We estimate that the new configuration of Parque dos Sonhos and Praça Jardim Santo André will benefit more than 11,000 children between 0 and 6 years old.



## BUENOS AIRES PEDALS IN THE LEAD

Following the success of the emergency bike lanes implemented during the first year of the pandemic, Buenos Aires (Argentina) expanded the transformation of street lanes, benefiting cyclists. We started this work in 2021 and developed a proposal to extend the city's current network of bike lanes to connect it to four vulnerable communities, improving the population's access to opportunities. The work led to implementing an innovative cycling infrastructure project on secondary roads and reformulating pavements in squares, restructuring the roads for all users.

A cost-benefit assessment conducted by the World Bank, with our collaboration, of the bike lanes on Corrientes and Córdoba avenues, implemented in 2020, showed that for every USD 1 invested in cycling infrastructure, USD 6 returns in well-being to citizens. According to this estimate, investment in these two roads would generate a total of USD 2.6 million in health benefits, time savings, road safety, and reduction of greenhouse gas emissions.

## ARGENTINE CAPITAL CITY LAUNCHES ROAD SAFETY PLAN

Following the guidelines of the Second Decade of Action for Road Safety, proclaimed by the World Health Organization (WHO), Buenos Aires launched its second Road Safety Plan for 2020-2023.

The new plan's actions were developed with WRI Brasil's support and focused on speed management to achieve the goal of halving traffic deaths by 2030.

## NATIONAL AGENDA FOR SUSTAINABLE URBAN DEVELOPMENT

Urban areas are simultaneously the center of the crisis and a fantastic opportunity for a more just, more resilient, low-carbon urban development. National governments face a triple challenge: recovering the economy shaken by the pandemic, facing the threats generated by climate change, and advancing their long-term development goals. Without urban territories, there will be no green recovery of the economy, which deserve more prominence on the federal agenda.

WRI Brasil supported the Ministry of Regional Development (MRD) in a participatory process to develop a national agenda for sustainable urban development, comprising 16

Sustainable Urban Development Goals (SUDG). Carried out in partnership with the German Agency for International Cooperation—often shortened to simply GIZ—the process of listening and involving society included a national workshop, five regional workshops, and several free conferences, bringing together more than 600 participants from all over Brazil.

After a lengthy process of systematizing and assessing the results of the participation activities, 16 SUDGs were defined and presented to society in December during the National Week of Sustainable Urban Development.

## CITIES POTENTIAL IN THE GREEN RECOVER

In October, the study *Aproveitando a Oportunidade Urbana do Brasil* (Portuguese adaptation for Seizing the Urban Opportunity) was launched. It was developed with the support of WRI Brasil and coordinated by the Coalition for Urban Transitions. The publication highlights the potential for reducing emissions and generating jobs from sustainable urban development in Brazil. The document brings together six recommendations for the federal government to accelerate this transformation. In a webinar with experts, we discussed how to put urban issues at the center of conversations about the country's economic recovery.



### Watch the webinar

*Urban Opportunity: How to make cities lead the green recovery*

*\*in Portuguese*



### Publication

*Seizing the Urban Opportunity*

The study was prepared with the support of WRI Brasil and coordinated by the Coalition for Urban Transitions.





## KNOWLEDGE TO FINANCE GREEN INFRASTRUCTURE

Brazil has a historic infrastructure deficit. The scenario would already be challenging if we were not facing the climate emergency, which requires green innovative infrastructure solutions. The good news is that low-carbon projects can help with one of the main challenges cities face: lack of resources.

Since 2017, WRI Brasil has been coordinating the Financing Network for Sustainable City Infrastructure (FISC Network), bringing together the main development financing institutions operating in the country to unlock green and climate financing in

cities. In the last year, this knowledge was gathered in the country's first comprehensive study on the subject. The FISC Network has also turned to funding Nature-Based Solutions (NBS) with a focus on adaptation and resilience.



### Publication

*Financiamento de Infraestrutura de Baixo Carbono nas Áreas Urbanas no Brasil (Low-Carbon Infrastructure Financing in Urban Areas in Brazil)*

*\*In Portuguese*

The report results from a partnership between WRI Brasil, Brazil's Ministry of Mines and Energy, and GIZ.

## CREATION OF THE UNICIDADES FORUM

In partnership with Brazil's National Front of Mayors, WRI Brasil launched the Unidades Forum. The initiative brings together, for the first time, a group of urban development, urban planning, and urbanism municipal secretaries (among others) from all regions of the country.

The goal of the initiative is to provide a space to discuss the current and future challenges of urban planning and management in the face of the difficulties posed by the economic, environmental, and health crises, as well as to technically support the position of mayors in national debates promoted by the Executive and Legislative branches of government.

## NATURE AS A SOLUTION TO URBAN CHALLENGES

From climate resilience to people's well-being, forests provide many services to city life. The Cities4Forests initiative has consolidated a global network of cities dedicated to supporting and leveraging actions to conserve and restore forests.

Last year, we worked with the city of Salvador to implement an innovative methodology that includes losses and gains of urban forests and trees in inventories of greenhouse gas emissions. In the state of Minas Gerais, we helped the municipalities of Viçosa, Rio Pomba, and Ponte Nova advance their Payment for Environmental Services programs (Pagamento por Serviços Ambientais, PSA). We supported Palmas in the improvement and financial structuring of a linear park project and in the access to non-reimbursable resources.

Another highlight of 2021 was the creation of the *Aliança Bioconexão Urbana* (Urban Bioconnection Alliance). Its goal is to accelerate the adoption of nature-based solutions in Brazilian cities. In addition to WRI Brasil, the coalition also counts on the participation of the Boticário

Foundation for Nature Protection, the Center for Management and Strategic Studies, the UN Global Compact Brazil Network, ICLEI—Local Governments for Sustainability, the Brazilian Biodiversity and Services Platform, the C40 Cities Climate Leadership Group, the Brazilian Panel on Climate Change, and The Nature Conservancy Brazil.

At the 2021 United Nations Climate Change Conference—more commonly referred to as COP26, Campinas, Extrema, Palmas, Salvador, and São Paulo joined the Cities4Forests Call to Action, uniting with 70 other cities from around the world that recognized their role in forest conservation and restoration.



### In the press

*In the podcast O Assunto, presented by Renata Lo Prete at news website G1, Urban Development manager Henrique Evers talks about adaptation in cities.*

*\*in Portuguese*

Campinas/SP. Photo: Renan Pissolatti/WRI Brasil.

## METROPOLITAN REGION OF CAMPINAS CONNECTS RESTORATION AND BIODIVERSITY

In April, along with other municipalities in its metropolitan region, Campinas launched the Connectivity Area Implementation Action Plan. In addition to nature-based solutions such as linear parks and urban tree plant and management, the plan includes the implementation of ecological corridors to connect the remaining green areas in the region.

Together with ICLEI South America, WRI Brasil supported the efforts of the Campinas Department of the Environment and Sustainable Development (SVDS, in Portuguese) with analysis to improve the mapping of forest remnants in the region and point out the best opportunities for reconnection between them.

The work proposed new research layers, considering the opportunity cost of land, sediment export, and water infiltration. Overlaid, they indicate the best opportunities for conservation and restoration in the region covered by the plan.



# forests

The year 2021 was crucial in the conservation and recovery of native vegetation in Brazil and worldwide. It marks the beginning of the Decade of Ecosystem Restoration, a United Nations initiative to promote the restoration of millions of hectares of degraded areas.

The restoration of landscapes and forests is one of the main concepts that underpin the approach of the WRI Brasil Forests program, which, through the generation of knowledge and tools, support for the formulation of public policies, and the implementation of demonstration units, shows that it is possible to accelerate and scale actions.

Cotriguaçu/MT. Photo: HD Mídia Produções/WRI Brasil.



## MONITORING RESTORATION IN THE COUNTRY

Thousands of rural producers, business initiatives, civil society organizations, governments, and research institutions are implementing landscape and forest restoration. However, there has been little recognition of the results already achieved. The Observatory of Restoration and Reforestation was launched to give visibility to these initiatives and projects, presenting the results in a systematic, transparent, and reliable way.

It is a pioneering initiative that systematizes and makes available data on initiatives and projects contributing to the monitoring of restoration in the country.

WRI Brasil contributed to the design and development of the platform, published by the Brazil, Climate, Forests and Agriculture Coalition,

alongside the Amazon Institute of People and the Environment (IMAZON), the Atlantic Forest Restoration Pact, and TNC. Forest restoration projects and areas in natural regeneration were identified, and reforestation projects were mapped in all Brazilian biomes.

The platform is vital for providing information on two of WRI Brasil's priorities: identifying areas already in the process of natural regeneration and advancing monitoring methodologies. In the first priority, data can help promote Assisted Natural Regeneration as a technique to support rural producers adapting to Brazil's Forest Code. In the second one, the Land and Carbon Lab, WRI's new global platform, will allow us to refine the monitoring of the recovery of native vegetation throughout the country, including in non-forest biomes, such as the *Caatinga* (a type of semi-arid tropical vegetation and an ecoregion characterized by this vegetation in northeastern Brazil).



### The platform

Visit the Observatory's website



### In the press

GloboNews news channel reported on the launch of the platform

\*in Portuguese



### Watch the webinar



Monitoring as a tool for Brazil to achieve its restoration goals

## RESEARCH AND DEVELOPMENT FOR NATIVE SPECIES IN BRAZIL

The Verena project completed five years in 2021. The project promotes forestry of native species in Brazil to boost a sustainable and profitable forest economy that removes carbon from the atmosphere. The work resulted in the publication of the report *Investimento em Reflorestamento com Espécies Nativas e Sistemas Agroflorestais: Uma Avaliação Econômica* (Investment in Reforestation with Native Species and Agroforestry Systems: An Economic Assessment), which systematizes economic data from 12 forestry cases throughout Brazil.

In addition to these success stories, WRI Brasil led, together with the Forestry of Native Species Working Group of the Brazil, Climate, Forests and Agriculture Coalition, an expansion of the research to 40 cases of companies that work in native forestry, agroforestry systems, and crop-livestock-forest integration.

The work showed that the rate of return on investment in the analyzed cases is between 9.5% and 28.4%, proving the economic viability of reforestation with native species.

Another work in partnership with Instituto Arapyaú and CocoaAction Brasil focused on the analysis of the economic viability of agroforestry systems using cocoa. We gathered data from four production systems for the southern region of the state of Bahia and three for the state of Pará, pointing out and quantifying indicators of the arrangements that can be adopted by producers and investors.

The existence of straightforward evidence on investments, costs, and financial return of production systems with cocoa will help with decision-making and may strengthen

the sector with projects that generate income for rural producers and restore degraded areas.

Nevertheless, for a forest economy with native species to take off in Brazil, it is still necessary to invest in research and development. Together with the Coalition, WRI Brasil contributed to creating the Research and Development Program in Silviculture of Native Species (PP&D-SEN, in Portuguese). This first national R&D program for native species connects researchers, companies, governments, and funders in a research development network in the Amazon and Atlantic Forest.

Linhares/ES. Photo: Lucas Sandonatto/WRI Brasil.

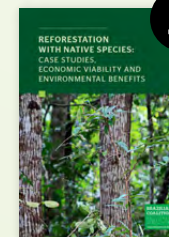
## Publications



*Investment in Native Tree Species and Agroforestry Systems in Brazil: An Economic Valuation*



*Research and Development Program in Silviculture of Native Species*



*Reforestation with Native Species: Case Studies, Economic Feasibility, and Environmental Benefits*



## In the press

An article in Valor Econômico echoed the numbers of a study carried out in partnership with the Brazil, Climate, Forests and Agriculture Coalition

\*in Portuguese

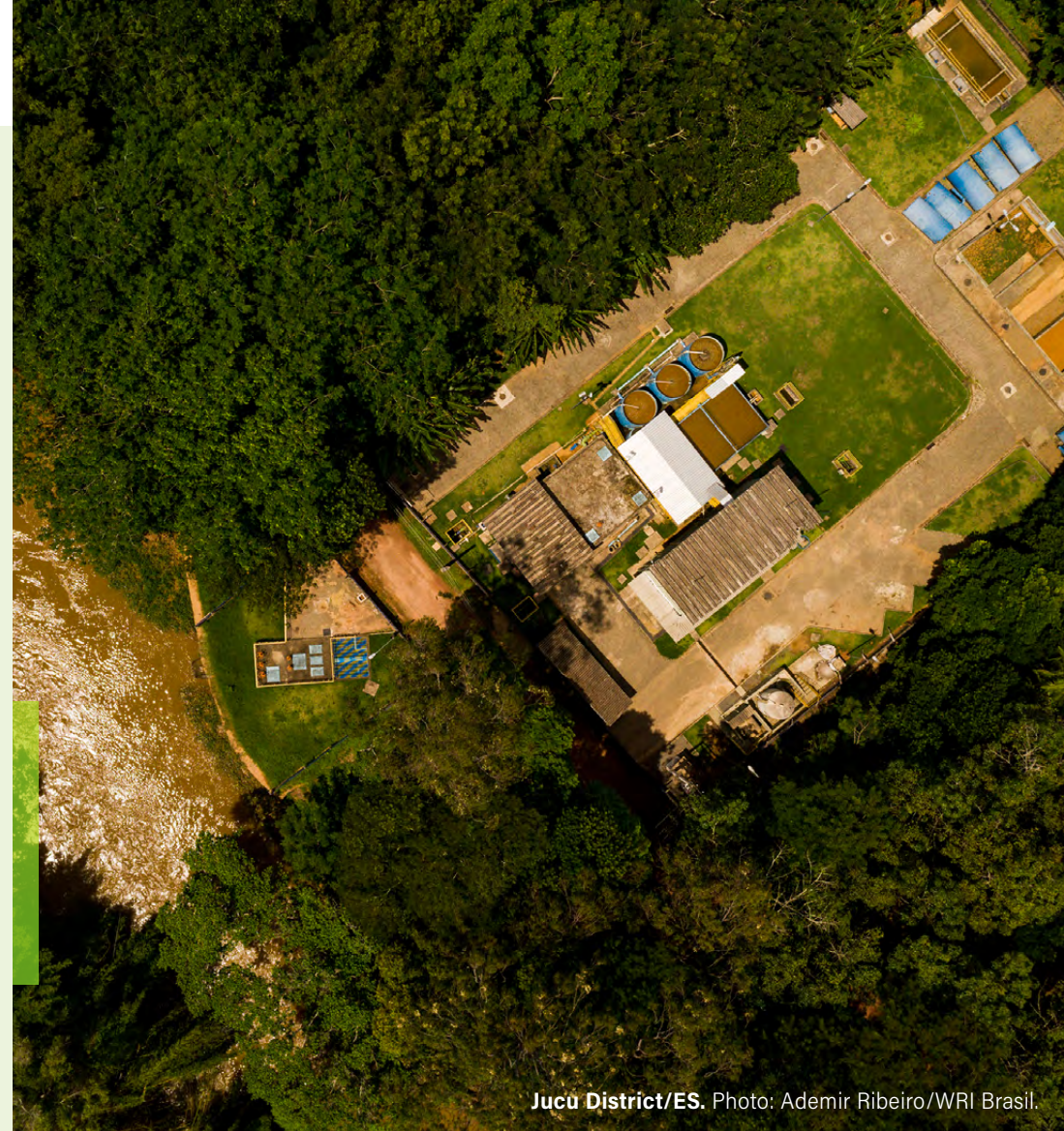
## DRIVING THE RESTORATION AGENDA IN ESPÍRITO SANTO

There are great restoration opportunities in Espírito Santo. In 2021, WRI Brasil sought to apply tools and developed diagnostics to gather the information that could support public policies to drive the restoration agenda in the state.

An example was the publication of the study *Natural Infrastructure for Water in Vitória's Water System, Espírito Santo State*. Relying on a methodology already used in São Paulo and Rio de Janeiro, the study found that targeted restoration of 2,500 hectares (ha) of degraded pastureland in the watersheds would generate benefits of USD 26.4 million in water treatment cost savings. The results helped to prioritize areas that can receive resources from public policies for restoration, such as the Payment for Environmental Services mechanism of the Reflorestar program.

Another advance in the local restoration agenda came from a study published in 2020. That year, WRI Brasil presented a discussion paper analyzing forest legislation in three states, including Espírito Santo. In 2021, in response to the study, a working group was established to boost native species forestry as part of the state's restoration strategy.

The next step is collaborating with local actors, governments, and the Brazil Climate, Forests and Agriculture Coalition to build a Carbon Program for the state to direct resources to restoration and reforestation for climate mitigation purposes.



Jucu District/ES. Photo: Ademir Ribeiro/WRI Brasil.



### Publication

*Natural Infrastructure for Water in Vitória's Water System, Espírito Santo State*



### Watch the webinar

*Forests for water security: the case of Espírito Santo*  
\*in Portuguese

# DECADE ON ECOSYSTEM RESTORATION

## PARTNERSHIPS TO GENERATE IMPACT

The UN 2021-2030 Decade on Ecosystem Restoration is a wonderful opportunity to accelerate and scale the restoration of landscapes and forests. WRI Brasil seeks to promote this agenda, and for that, it counts on important work executed in partnership with leading organizations, actors, and companies in the world of restoration.

One of the most impactful partnerships was the collaboration with TNC, Conservation International (CI), and WWF-Brasil—some of the largest environmental organizations operating in the country—in work to boost the current and future actions of each organization. Called Union4Restoration, the partnership was presented at COP 26 in Glasgow, Scotland.

Another critical partnership aimed at promoting assisted natural regeneration as a restoration technique.

In 2021, WRI Brasil started working with Imazon, Centro de Vida Institute (ICV), and pulp and paper company Suzano to identify opportunities and implement restoration actions in two Amazonian states: Pará and Mato Grosso.

Along with the The Atlantic Forest Restoration Pact, we supported the second season of the Tom da Mata podcast, which brought stories from restoration implementers and researchers. And in partnership with Mantiqueira Conservative Program, we supported a webinar series called *Conexão Mantiqueira*, which brought knowledge about restoration to municipal managers and people interested in the topic.



### Listen here

*Tom da Mata* podcast brings stories about restoration in the Atlantic Forest

*\*in Portuguese*





# climate

WRI Brasil works to drive the country's transition to a new low-carbon economy that reduces social inequalities and reconciles ecosystem conservation with job and income generation.

We develop analyses and studies to contribute to pathways and priorities for governments, private sectors, and civil society organizations to reconcile a just economic transition with ambitious climate action. We work to strengthen technical capacity in formulating public policies, governance, and transparency for the climate in Brazil.

Manaus/AM. Photo: Bruno Kelly/WRI Brasil.



## NEW ECONOMY OF THE BRAZILIAN AMAZON

The Amazon. Photo: Paralaxis/Shutterstock.

It will not be possible to keep global warming at 1.5° C without the Amazon—and there is no Amazon without a new sustainable economic model. In 2021, WRI Brasil created the initiative New Economy of the Brazilian Amazon (NEA-BR), bringing together a group of almost 50 researchers to analyze and identify the characteristics of this new sustainable economic model for the region and the real opportunities for implementation at scale in the next decade.

The goal is to promote a just and inclusive transition for the Amazon economy in time to avoid what scientists call a tipping point, when the forest begins to degrade irreversibly due to deforestation, accelerating climate change. The work is a sequel to the New Economy for Brazil initiative, which showed in 2020 how a green recovery of the Brazilian economy has the potential to create two million more jobs and increase Brazilian GDP by BRL 2.8 trillion over the next decade.

NEA-BR is led by WRI Brasil and New Climate Economy and innovates by bringing together a multidisciplinary team, especially from the economic area, and involving universities from different regions of Brazil, with researchers from the Amazon playing a leading role. The pollination between economic thoughts from different regions and schools created a rich framework for thinking about a new economy for the region, including unprecedented analyzes on bioeconomy, agriculture, and infrastructure, among other topics, which will be published in 2023.



### In the press

Jornal da Ciência of the The Brazilian Society for the Advancement of Science, published an extensive report on bioeconomy, with the participation of the WRI Brasil's senior economist Paulo Camuri

*\*in Portuguese*

Among the research partner institutions are:

- Federal University of Pará (UFPA)
- University of Sao Paulo (USP)
- Federal University of Minas Gerais (UFMG)
- Alberto Luiz Coimbra Institute for Graduate Studies and Research in Engineering
- Federal University of Rio de Janeiro (COPPE/UFRJ)
- Center for Climate Crime Analysis (CCCA)
- Amazon Environmental Research Institute (IPAM)



Salvador/BA. Photo: Joá Souza/Shutterstock.

## NATIONAL CLIMATE ACTION

The year was also marked by COP 26 in Glasgow, which focused on starting the implementation phase of the Paris Agreement with the most ambitious goals possible. Brazil, unfortunately, started the year by announcing a reduction in its ambition compared to the commitments made in 2015, leading the Climate program to technically explain why it was a weak 2030 emission reduction target, and take a stand in the face of Brazil's lack of ambition and transparency regarding the country's commitments to reducing emissions.

During the conference, WRI Brasil organized a discussion at the Brazil Climate Action HUB on existing tools in the country to assist in the planning and monitoring of Brazil's NDCs.

The event marked the official launch of the EPS Brasil tool (read more on the next page). It was attended by the Greenhouse Gas Emission and Removal Estimating System (SEEG) and the Talanoa Institute.



### In the press

A diretora de Clima, Carolina Genin, repercutiu no Estadão os resultados do relatório lançado pelo Painel Intergovernamental sobre o Mudanças Climáticas (IPCC), das Nações Unidas

## TOOL TO ANALYZE THE IMPACT OF PUBLIC POLICIES

In 2021, we finished the work on the EPS Brasil tool, which allows us to assess more effective public policies for climate action in the country. The acronym comes from the English name Emissions Policy Simulator. This system can simulate the effects of direct and indirect greenhouse gas (GHG) emissions according to different sectoral and intersectoral policies.

For example: if the requirements for vehicle emissions standards were higher or illegal deforestation reached zero, how much would Brazil's emissions reduction be in 2050?

The tool was launched by the Ministry of Science, Technology and Innovation in October, after work in partnership between WRI Brasil and COPPE-UFRJ. It allows the Brazilian government to simulate and assess the impact of greenhouse gas mitigation actions on crucial economic sectors such as transport, industry, energy, and land use. It also issues integrated estimates and projections for emissions across these sectors. It makes it possible to assess the impact of different policy combinations on emissions.



### Publication

*Simulador de Políticas Setoriais e Emissões: Métodos, Dados e Resultados para o Brasil em 2050 (Sector Policies and Emissions Simulator: Methods, Data and Results for Brazil by 2050)*

*\*in Portuguese*



Manaus/AM. Photo: Bruno Kelly/WRI Brasil.

A photograph of two young boys riding bicycles away from the camera down a narrow, paved alleyway. The boy on the left is shirtless and wearing green shorts, while the boy on the right is also shirtless and wearing blue and orange patterned shorts. They are riding on a grey brick-paved path. To the left of the path is a lush green wall of plants. To the right is a light-colored building with several windows. In the background, another child is visible further down the alley. A yellow address sign with the number '4028240' is visible on the building wall. The scene is brightly lit, suggesting daytime.

# COMMUNICATIONS

Recife/PE. Photo: Adriana Preta/WRI Brasil.

Strategic and integrated communications contributes to the impact and dissemination of WRI Brasil's research and solutions, strengthening the presence of the institute among decision makers and other audiences.

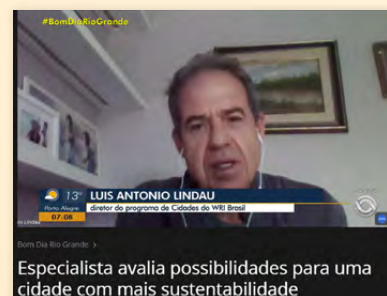
## IN THE PRESS

2.7k  
media  
mentions



In 2021, the total number of articles in the press that mentioned WRI Brasil grew by 56% compared to the previous year. The growth was not only quantitative; the several topics guided by the Cities, Climate, and Forests programs made us more present in national and international vehicles.


Digital channels also registered progress, not only in terms of growth but mainly in terms of audience enhancement, with the implementation of strategies segmented by audiences and topics.




Click on the images to see the reports in Portuguese

## DIGITAL FOOTPRINT

 **+3.6k**  
new followers  
+136%


 **+315k**  
users reached  
+85,8%

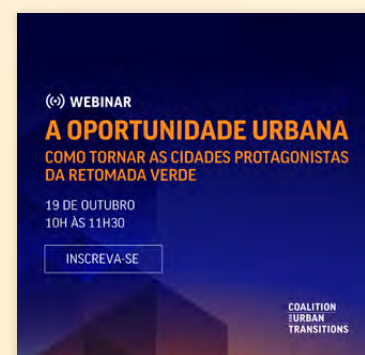
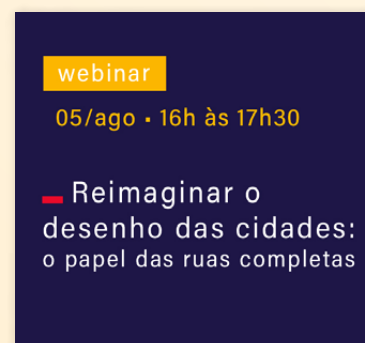
 **+2.6million**  
users reached

 **+4.4k**  
new followers


 **+14 k**  
publication  
downloads

 **1.2 million**  
sessions  
on the website

  
**8 webinars**  
with more than  
**2,200 viewers**



FAVOR NOS ENVIAR LINKS DAS  
VERSÕES EM INGLÊS

 See all events  
\*in portuguese



# board and **LEADERSHIP**

Manaus/AM. Photo: Bruno Kelly/WRI Brasil.

## BOARD OF DIRECTORS

### Marcelo Furtado

Chairman of the Board of Directors and  
CSO and Partner, ZScore/BlockC

### Manish Bapna

President and Chief Executive Officer of  
the Natural Resources Defense Council

### Janet Ranganathan

Vice President of Science and Research,  
WRI

### Orlando Strambi

Professor and Coordinator of the  
Department of Transportation Engineering,  
University of São Paulo (USP)

### Anamaria Schindler

Co-President Emeritus, Ashoka

### Valmir Ortega

Executive Director, Conexsus

### Johannes van de Ven

CEO, Good Energies

### Leonardo Fleck

Sustainability Lead for the Amazon Region,  
Santander

## AUDIT COMMITTEE

### Diogo de Souza Dias

Chairman of the Audit Committee

### Tiniti Matsumoto Junior

### Marcelo Torres

## WRI BRASIL LEADERSHIP TEAM

### Elizabeth Farina\*

Executive Director

### Suzanna Lund\*\*

Operations Director

### Luis Antonio Lindau

Cities Program Director

### Carolina Genin

Climate Program Director

### Fabíola Zerbini\*\*

Forests, Land Use and Agriculture Director

### Fernanda Boscaini\*\*\*

Communications Director

*\* Joined the organization in April 2021*

*\*\* Assumed the position in February 2022*

*\*\*\* Acted as Executive Director until April 2021*

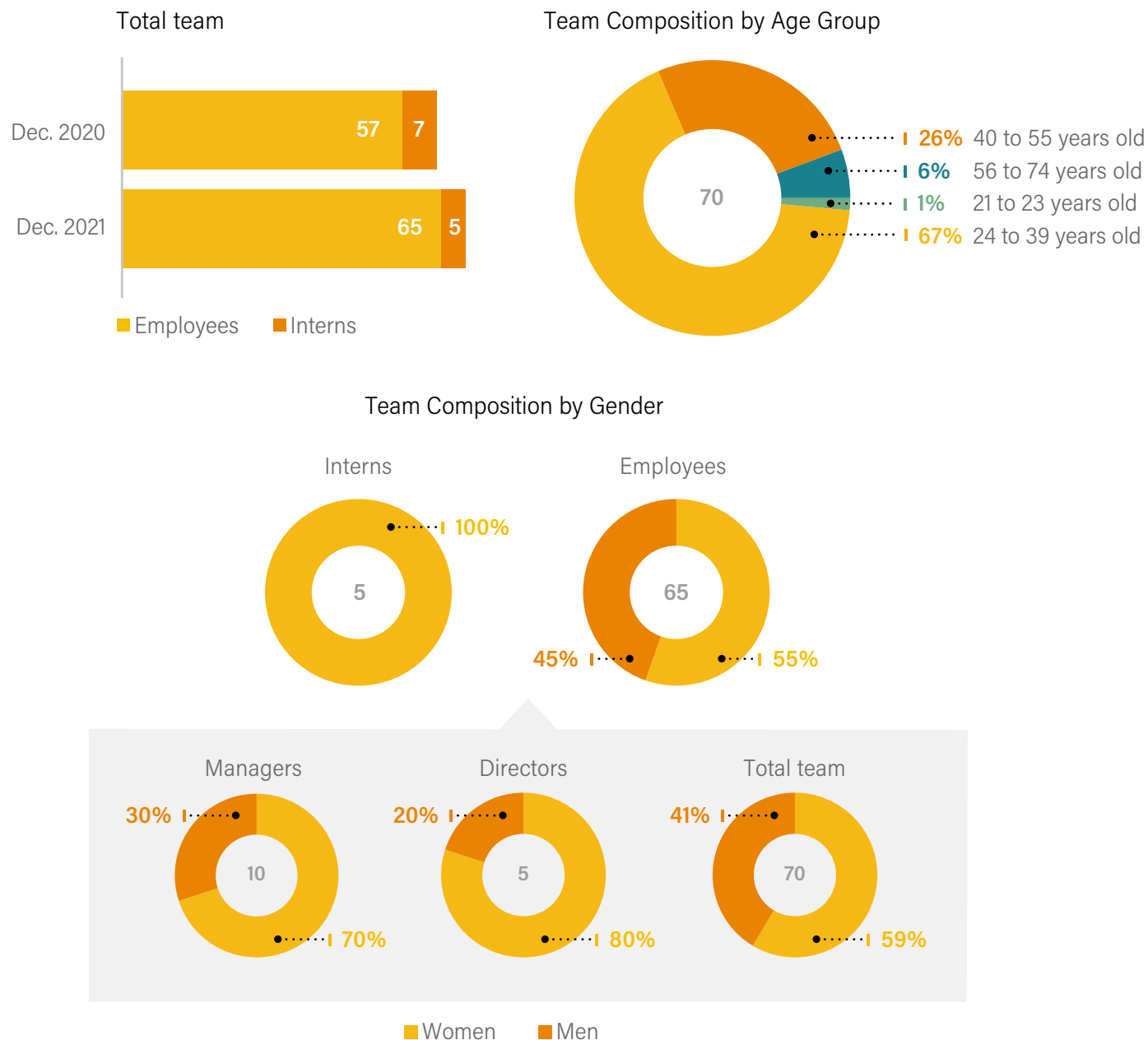


# TEAM

Salvador/BA. Photo: Joá Souza/WRI Brasil.

## TEAM

During the second year of the Covid-19 pandemic, we strengthened care for the quality of life, safety, health, and well-being of our team. We kept our work 100% remote and held online listening and guidance meetings to encourage care between teams and individuals.





# FUNDERS

Cotriguaçu/MT. Photo: HD Mídia Produções/WRI Brasil.





Recife/PE. Photo: Adriana Preta/WRI Brasil.

At WRI Brasil, we believe each partner plays a key role in effectively making an impact. We seek to create solid relationships in which shared values and objectives are incorporated in each action and in the excellence of our team. We share and learn daily with these actors who believe and trust in what we do and enrich us with their visions.

The work of WRI Brasil is only possible thanks to partnerships based on commitment.

We greatly appreciate partners' trust in building a collaborative, sustainable transformation process with us.

- Alcoa Foundation
- Arapyaú Institute
- Bahia Forest Forum
- Bernard Van Leer Foundation
- Bezos Earth Fund
- Bloomberg Philanthropies
- Cargill
- Caterpillar Foundation
- Corporación Andina de Fomento
- UK Department of Business, Energy and Industrial Strategies
- FedEx Corporation
- German Agency for International Cooperation (GIZ)
- Good Energies Foundation
- Government of Denmark
- Humanize Institute
- ICLEI - Local Governments for Sustainability
- Inter-American Development Bank (IADB)
- International Climate Initiative of the Federal Ministry of the Environment, Nature Protection, Nuclear Safety and Consumer Protection of Germany
- Instituto Clima e Sociedade (iCS)
- Itaú Unibanco S.A.
- Norway's International Climate and Forest Initiative (NICFI)
- Norwegian Ministry of Climate and the Environment
- Renova Foundation
- Stephen M. Ross Philanthropies
- Sustainable Trade Initiative (IDH) with support from the Laudes Foundation
- World Bank
- World Resources Institute



# FINANCIALS

São Paulo/SP. Photo: Léu Britto - Monomito Filmes/WRI Brasil.





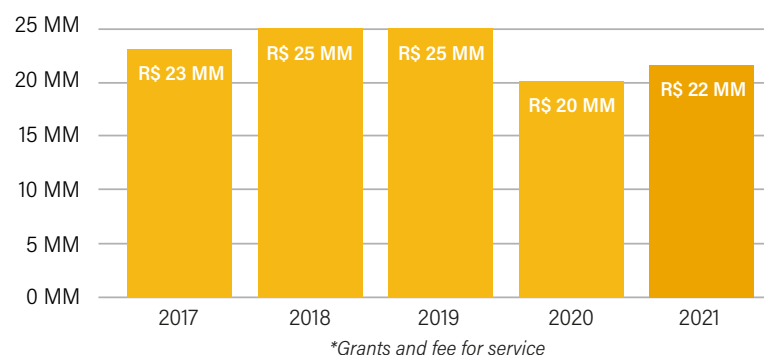
Santa Maria de Jetibá/ES. Photo: Lucas Sandoval/WRI Brasil.

Despite the challenges faced because of the continuity of the pandemic, the projects planned for 2021 were maintained, allowing for a 10% increase in WRI Brasil's revenue compared to the previous year.

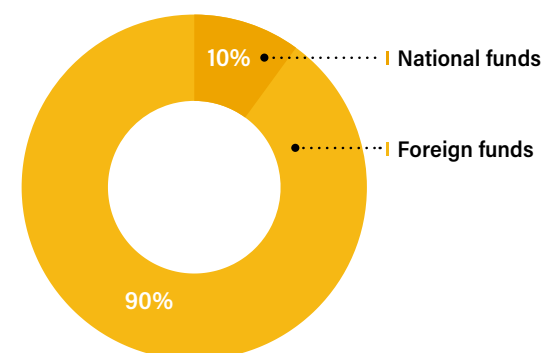
Part of the expenses related to in-person activities and travel scheduled for 2021 were postponed or reduced without significantly affecting the projects.

In addition to the revenue from donations, the organization also earns income from providing services such as the development of studies, guidebooks, etc. In 2021, this type of revenue represented 7% of the total income.

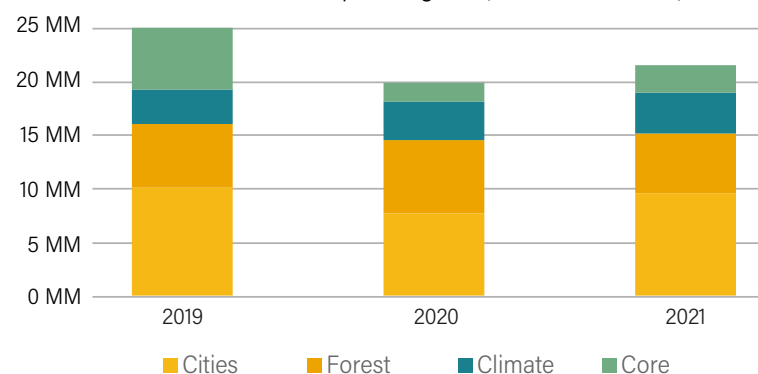
Total Revenue\* from 2017 to 2021 in BRL



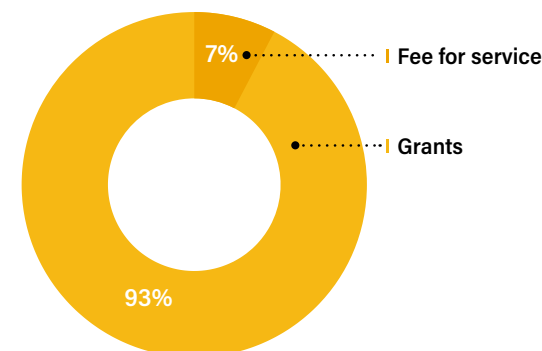
Composition of Revenue in 2021



Total Revenue per Program (in millions of BRL)



Type of Revenue in 2021



**Access the complete Independent Auditor Report document**

*Our financial statements were audited and considered appropriate as of December 31, 2021.*

